

MONTHLY MEMBERSHIP PROGRESS REPORT

LOCATION MINNESOTA

District 5M 11

Results as of: 6/30/2023

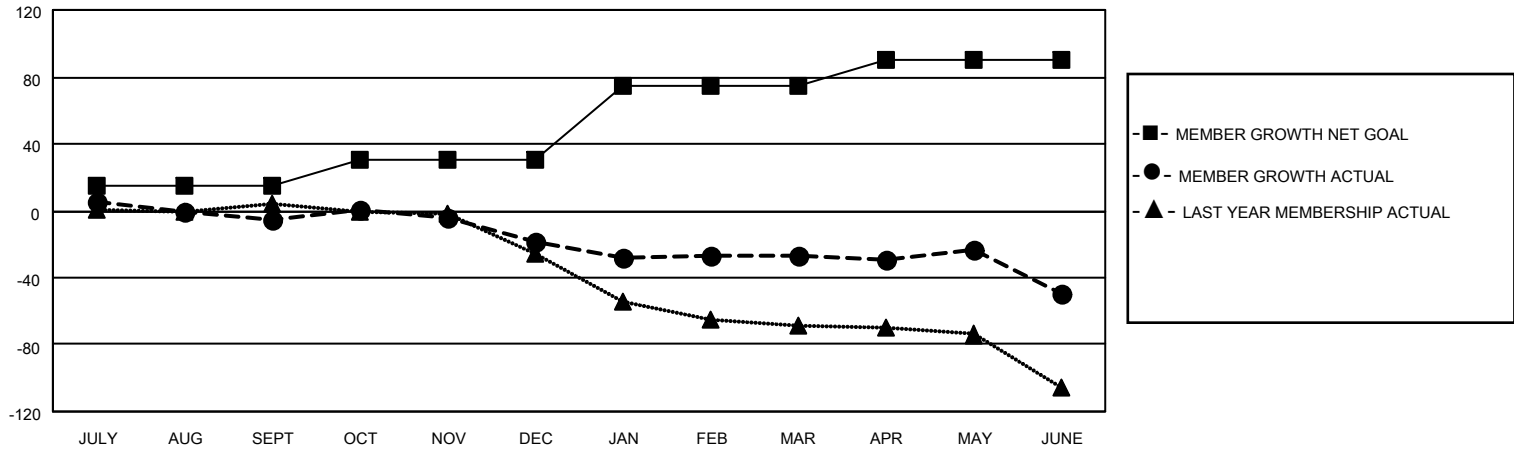
Clubs			
RESULTS FOR 2022-2023			
QUARTER	NEW CLUB GOAL	NEW CLUBS	DROPPED CLUBS
JULY/AUG/SEPT	0	0	0
OCT/NOV/DEC	0	0	0
JAN/FEB/MAR	1	0	0
APR/MAY/JUNE	0	0	1

Members			
RESULTS FOR 2022-2023			
QUARTER	MEMBER GROWTH NET GOAL	MEMBER GROWTH ACTUAL	DROPPED MEMBERS ACTUAL (including transfers)
JULY/AUG/SEPT	15	35	26
OCT/NOV/DEC	15	32	39
JAN/FEB/MAR	45	32	37
APR/MAY/JUNE	15	39	59

GOALS AND ACTUAL NEW CLUBS CUMULATIVE



GOALS AND ACTUAL MEMBERS CUMULATIVE



DROPPED CLUBS: 1

38 CLUBS OF 63 ADDED 1 OR MORE NEW MEMBERS

GENDER DISTRIBUTION

MALE	1,088 (69.30%)
FEMALE	482 (30.70%)
NON BINARY	0 (0.00%)
PREFER NOT TO ANSWER	0 (0.00%)

DROPPED MEMBERS

[CLICK HERE FOR CUMULATIVE MEMBERSHIP DATA](#)

DECEASED	21
CLUB CANCELLED	1
OTHER	139
TOTAL	161

TOTAL FAMILY UNIT MEMBERS	311
FAMILY MEMBERS PAYING HALF DUES	159